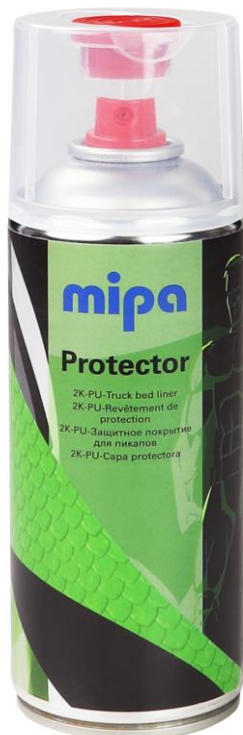


Mipa 2K-Protector Spray is a highly resistant 2K polyurethane-acrylic paint for a scratch-resistant and robust coating of truckbed surfaces (e.g. pick-up truck beds) and of all heavy duty surfaces on commercial vehicles, off-road vehicles, camping cars, trailers and SUVs etc.. Colour: black

Possible application areas:

- bodies of SUVs and off-road vehicles
- rims of SUVs and off-road vehicles
- floors and storage areas in caravans
- underbodies and chassis
- bullbars, running boards, roof rack, spare wheel covers, etc.
- fender well
- access ramps, decks of recovery vehicles and of trailers

Beside its very high wear resistance, Mipa 2K-Protector Spray provides also an excellent mechanical and chemical resistance. The very high vertical stability allows applying extremely high-build coats.



Substrates:

steel:

clean, sand slightly if necessary (remove any rust and mill scale) and degrease with Mipa Silikonentferner
priming with Mipa 1K* or 2K primer/ filler

zinc:

clean with ammonia solution (Mipa Zinkreiniger)
priming with Mipa 1K* or 2K primer/ filler

aluminium:

clean, sand slightly and degrease with Mipa Silikonentferner
priming with Mipa 1K* or 2K primer/ filler

wood substrates:

clean, sand slightly and dust off
priming with Mipa 1K* or 2K primer/ filler

GRP, intact 2K-resistant paintworks:

clean, sand slightly and degrease with Mipa Silikonentferner

Plastics:

clean, sand slightly and degrease with Mipa Kunststoffreiniger
priming with Mipa plastic adhesion promoter

well dried 2K primer or 2K filler

Test application if necessary!

*only if recoatable with 2K products



Pretreatment/ Cleansing

Sand surfaces slightly!

pre-clean with Mipa Silikonentferner

Characteristics

high UV and weathering resistance
excellent shock and scratch resistance
high resistance to fuels and oils
very good water resistance
provides noise reduction
short-term heat exposure: 180 °C
permanent heat exposure: 150 °C

**Colour / gloss
level**

black / matt - satin matt

Preparation



Shake can vigorously before use!



Prior to coating, remove the red button from the safety cape, turn the spray can 180° and fit the button onto the pin in the base of the aerosol.



Place the spray can upside down on a firm surface. Press the red button all the way down with the palm of your hand until a stop is reached.



Shake can vigorously to mix the content!

Application:



Spray to test - spraying distance 70 - 110 cm
2 passes

Consumption:

approx. 1.4 m²

Possible spray textures:

flat, wavy texture:



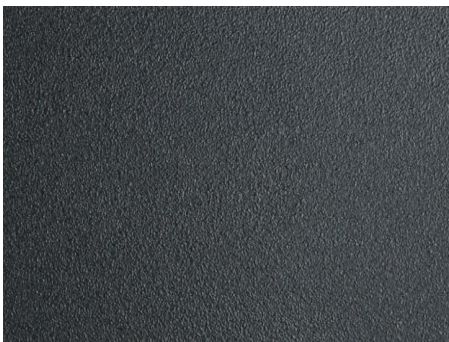
1. Apply generously 1 coat from a distance of 90 cm, moving the spray can slowly over the panel, applying the paint material evenly and overlapping each pass until a closed paint film is achieved.

2. Turn can upside down and spray until the valve is clean.

3. After approx. 20 min. flash-off at ambient temperature, apply a second coat in the same way as the first coat.

4. Turn can upside down and spray until the valve is clean.

coarse wavy texture:



1. Apply generously 1 coat from a distance of 90 cm, moving the spray can slowly over the panel, applying the paint material evenly and overlapping each pass until a closed paint film is achieved.

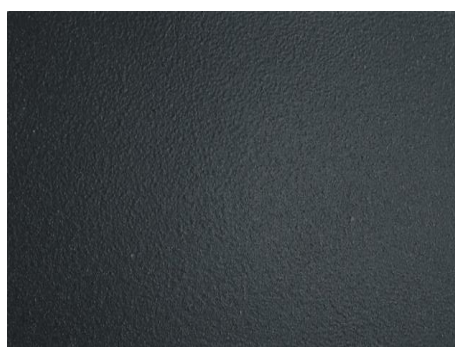
2. Turn can upside down and spray until the valve is clean.

3. After approx. 20 min. flash-off at ambient temperature, apply a lighter second coat, moving the spray can faster and increasing the distance to 100 cm



fine, satin matt texture:

1. Apply a thin coat from a distance of 90 cm, moving the spray can quickly and applying the paint material evenly.
2. Turn can upside down and spray until the valve is clean.
3. After approx. 20 min. flash-off at ambient temperature, apply a second coat in the same way as the first coat.
4. Turn can upside down and spray until the valve is clean.



Matt, rough texture:

1. Apply 1 thin drop coat from a distance of 100 cm until opacity is achieved
2. Turn can upside down and spray until the valve is clean.
3. After approx. 20 min. flash-off at ambient temperature, apply a 2nd very light coat, increasing the distance to 110 cm in order to ensure the formation of a rough texture
4. Turn can upside down and spray until the valve is clean.

Flash-off time:



5 - 10 min. between coats
10 - 15 min. prior to oven drying

After use:



Turn can upside down and spray until the valve is clean, this prevents the valve from clogging up.

Drying times:



Drying:

dust dry: 20 - 30 min. / 20°C
set to touch: 60 - 70 min. / 20°C
ready for assembly: 24 h / 20°C

Pot life:

approx. 1.5 h / 20°C

Processing conditions:

from +10°C. and up to 80% relative air humidity

Storage:

for 3 years, if stored tightly closed in cool and dry places



item no. 21295 0000

Mipa 2K-Protector Spray

Technical data sheet

EN -1/1020

page 4 of 4

VOC- regulations:

EU limit value of the product (cat. B/e): 840 g/l (2007)
This product contains max. 840 g/l of VOC.

Safety advice:

see material safety data sheet

This data sheet is for information purpose only! The information is in accordance to our knowledge up to the latest standards and is based on years of experience in the manufacture of our products. The information is non binding and without guarantee.